

KARTRITE

Kartrite HCM-225 - 63L Cement Mixer

USER MANUAL



Product may vary slight from the image due to model upgrades.

**WARNING: NOT USING THIS PRODUCT IN ACCORDANCE WITH INSTRUCTIONS MAY
RESULT IN SERIOUS INJURY OR DEATH**

**Please read these instructions carefully and retain for future reference
FOR DOMESTIC OUTDOOR USE ONLY**



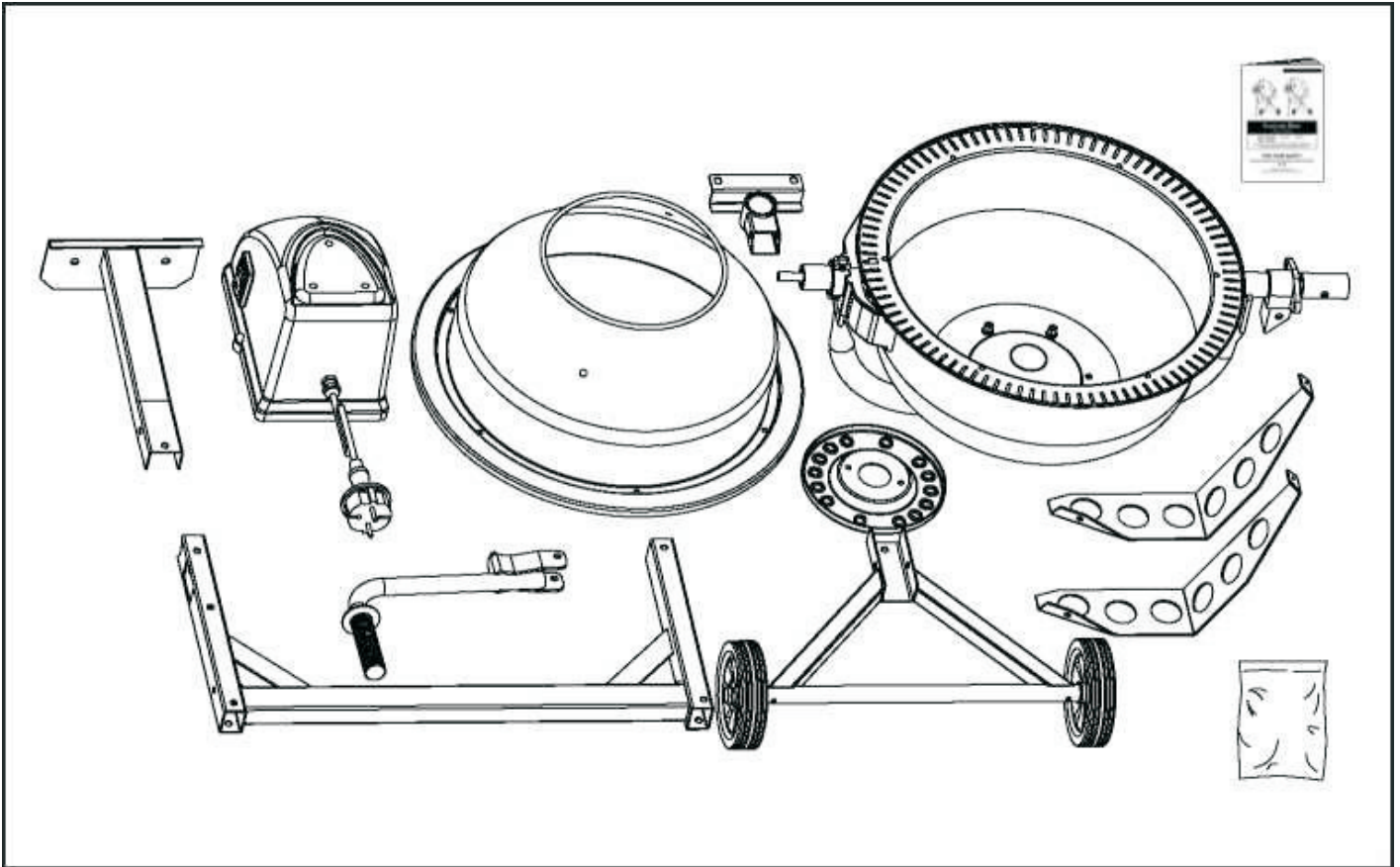
CAUTION

Review all instruction labels affixed to the machine in addition to these instructions prior to use

WARNING:

- 1.) **Serious accidents can occur when other people are allowed inside the work zone. Keep everyone else out of the area of operation when operating this machine.**
- 2.) **Do not use the product whilst under the influence of drugs or alcohol, or other medication which may affect your ability.**
- 3.) **Do not use this product when tired or fatigued.**
- 4.) **Ensure the area around the mixer is clear of clutter and always use this product on a flat, even, hard surface which is capable of supporting the weight of this product and the cement contained therein.**
- 5.) **The intended use for this product is to for mixing of concrete, mortar and plaster.**
- 6.) **Do not use in the vicinity of flammable products and do not use the mixer to mix flammable or explosive substances.**
- 7.) **Prior to each use, inspect the mixer for signs of damage or any missing parts. Do not use the product if anything appears to be damaged or missing.**
- 8.) **Ensure all the guards are in place and in working order prior to each use. Check all the nuts and bolts to ensure they are securely fastened to the product.**
- 9.) **Do not connect the mixer to power with a missing motor cover.**
- 10.) **Replace any damaged, missing or faulty parts, including any damaged labels.**
- 11.) **After using the product, its components may still be hot. Allow sufficient time for them to cool down prior to touching or adjusting.**
- 12.) **If you have not had prior training or experience using a cement mixer, it is recommended that you arrange for professional training to be carried out, or instructions provided by a qualified or experienced person, prior to using this machine.**
- 13.) **Keep all limbs away from moving parts.**
- 14.) **Ensure you are wear appropriate clothing, footwear, hand, face, eye and ear protection. Loose fitting clothing and jewellery may get caught in the machine.**
- 15.) **Do not pull the machine by using the cord. Keep cord away from sources of heat, oil and sharp edges.**
- 16.) **Do not use extension cords longer than 50m in length. Position all cords appropriately for your location, ensuring they are not damaged by vehicles or form tripping hazards.**
- 17.) **Using incorrect cords may result in motor damage and void warranty.**
- 18.) **Ensure the electric circuit is adequately protected and it corresponds to the power, voltage and frequency of the motor. Failure to do so may result in damage to the motor.**

COMPONENTS



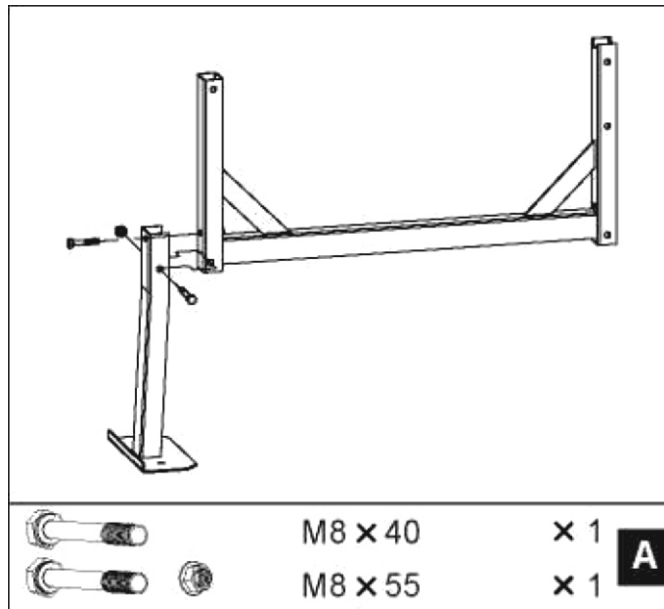
	M8 x 40	x 1	A
	M8 x 55	x 1	
	M8 x 40	x 1	B
	M8 x 55	x 1	
	M8 x 50	x 2	C
	M8 x 20	x 2	D
	M8 x 16	x 2	E
	M6 x 12	x 6	
	M8 x 20	x 2	F
	M8 x 50	x 1	G
		x 1	
	M8 x 55	x 1	H
	M8	x 2	

HOW TO ASSEMBLE

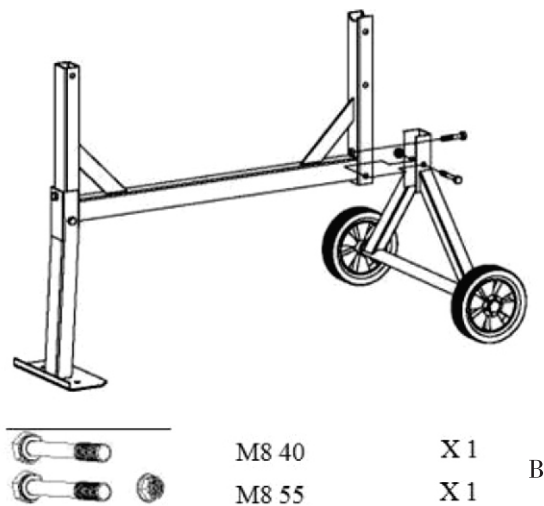
It is recommended that two people assemble this product.

Step 1: Stand

- With the frame positioned on its side, attach the support leg as shown. Insert M8x55 hex bolt through the holes from the side, and using the lock nut tighten it on the other side.
- Use the M8x40 hex bolt with the nut, attaching it to the frame. Tighten both.

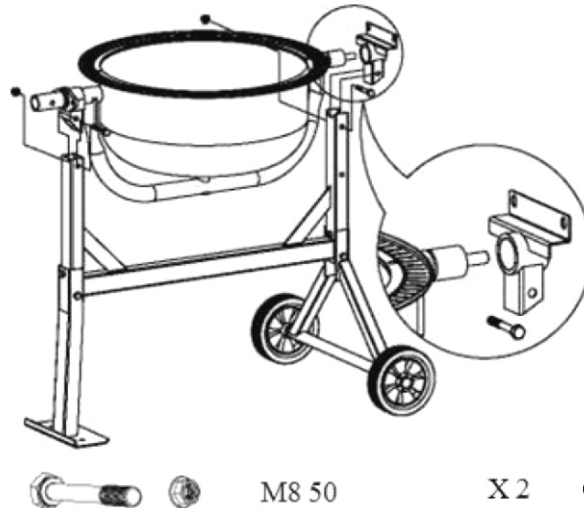


- Turn over the frame and attach the axle bracket to the wheels, using the M8x40 and M8x55 bolts and nuts. Ensure that the bolts and nuts are sufficiently tightened.



Step 2: Bottom Drum

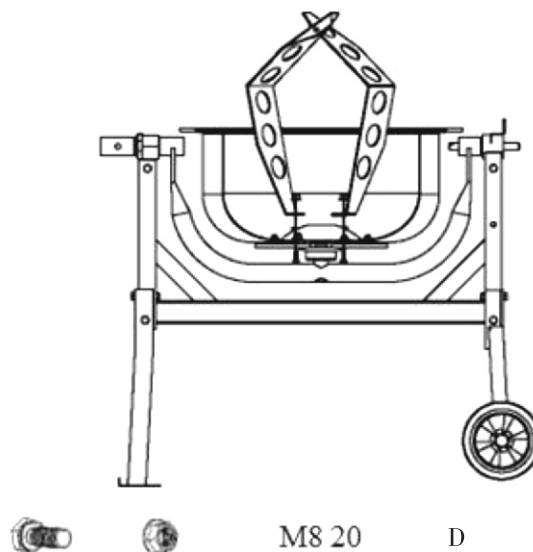
- To attach the bottom part of the drum, slide the bracket onto the drive shaft sleeve.
- Two people, exercising great care, set the bottom part of the drum with support arm into the side supports of the stand as shown, ensuring the bearing blocks slot into the channels provided by the side supports. The larger diameter shaft should be at the leg end of the stand.
- At each side, line up the holes in the side support with those in the bearing block and insert a M8X50 hex bolt from one side, then a lock nut from the other side. Tighten with a wrench



Step 3: Mixing Blades

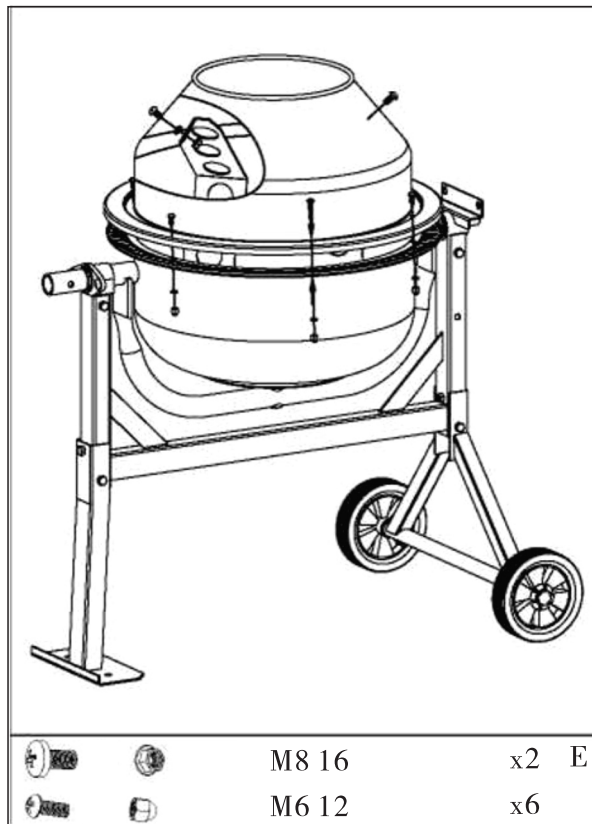
- Mount the mixing blades inside the bottom drum loosely as shown. Two holes are provided at the base of the drum into which a (M8x20) bolt may be inserted from the outside. A leather washer and a lock nut should be threaded on loosely, on the inside. The leather washer should be placed under the blade down against the drum.

NOTE: Two arrows are labeled on upper drum and bottom drum to make their position relative. If you have difficulty in correctly positioning the mixing blades, it is helpful if you temporarily mount the upper drum on the top of the bottom drum, rotating it so that the two arrows line up.



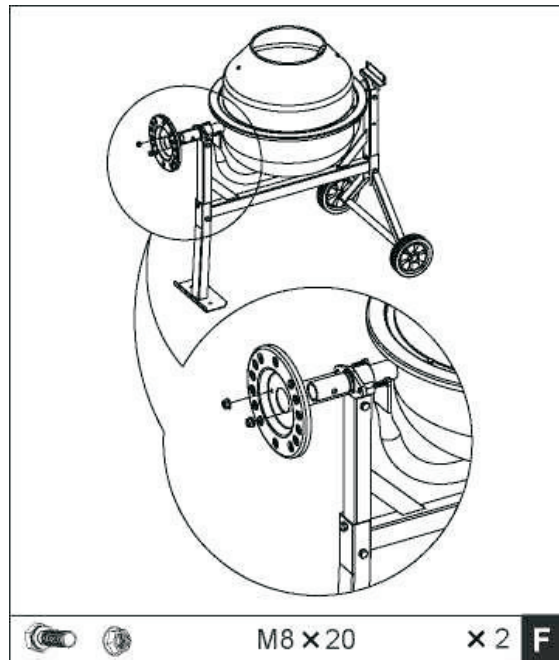
Step 4: Upper Drum

- Two people, exercising great care, to position the upper drum on top of the bottom, over the rim, ensuring the mounting perforations align in both parts, as well as the labelled arrows.
- Insert (M6x12) cross headed screws into each mounting hole in the rim. Secure each screw from below with a spring washer and a cap nut, ensuring the tightening process is completed progressively.
- Mixing blades are attached to the upper drum with the use of two (M8x16) cross headed screws, from the outside through the holes in the drum.
- Place a leather washer inside, between the drum and the blade. Using a lock nut, secure the mixing blade.
- Ensure the top and bottom mixing blade mountings are tight.

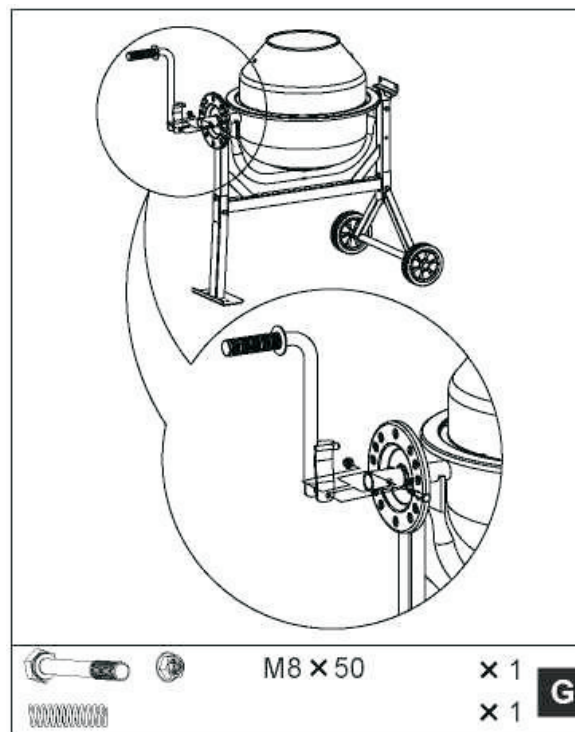


Step 5: Tipping Bar

- Slide the locking plate over the large diameter shaft at the leg end of the frame with the rim facing inwards as indicated. Secure it by using two (M8x20) bolts and lock nuts.



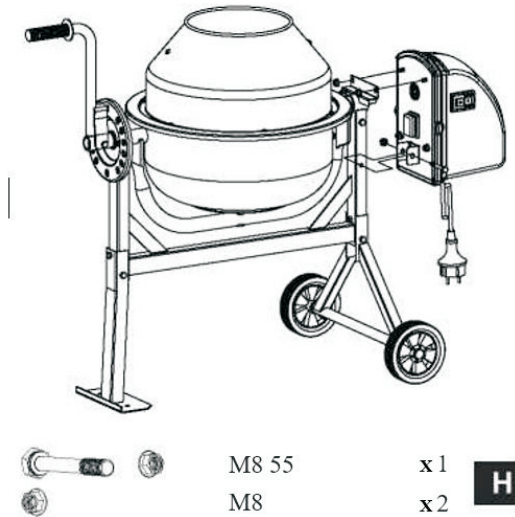
- Insert the spring into the bar pipe.
- Holding it in place using a finger, place the bar over the larger diameter shaft ensuring that the shaft retains the spring within in.
- Press down on the bar until the holes in the bracket align with the hole drilled.
- Insert a (M8x50) hex bolt and screw on a lock nut from the other side.
- Fix the nut up against the bracket firmly, but not tightly, ensuring that the bar may pivot about the bolt.



NOTE: Bar must be allowed to pivot about the bolt so that the lug on the bracket can be engaged or disengaged from the hole in the locking plate.

Step 6: Transmission Case

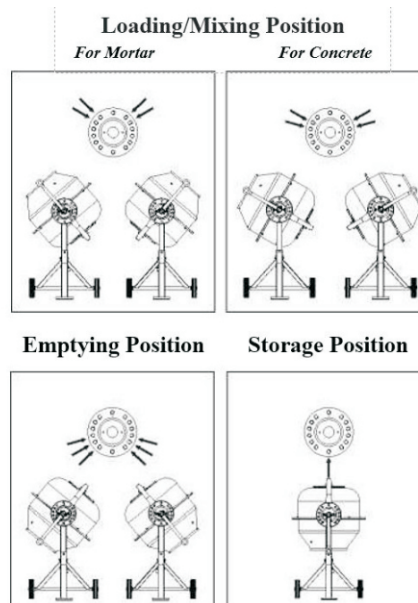
- Aligning the keyways, slide the transmission case over the pinion shaft.
- Screw the two lock nuts to the threaded stub on the transmission case.
- Attach the lower mount bracket to the frame using a (M8x55) bolt and lock nut.



OPERATING INSTRUCTIONS

Drum Tilting

- Spring loaded tipping bar with locking lug provides an easy control of the drum, allowing the user the additional option of locking the mix, discharging and storing positions.
- Drum can be locked in position by lug on the self locating tipping bar which engages into the locking plate on the mixer frame.
- To tilt the drum, withdraw the tipping bar to disengage the locking lug. This in turn allows the tipping bar and drum to be turned in the same direction.
- For the drum to be retained in position, align the lug with the hole, slightly release the tipping bar, while retaining the drum. Rotate the tipping bar until the locking lug engages into the locking plate on the mixer frame.



Loading

- Completely unwind the extension cord and connect it to the concrete mixer, before connecting it to power
- Always start the mixer prior to loading the drum, with the drum rotating.
- Do not throw materials into the mixer to avoid it sticking firmly to the back of the drum. Trickle the materials in steadily over the rim.
- For best results proceed as follows:
 - Pour the required amount of gravel into the drum
 - Pour the required amount of cement into the drum
 - Pour the the required amount of sand into the drum.

NOTE: Cement mixer is equipped with a thermal protector to ensure the motor doesn't overheat.

Cleaning

- Do not turn the mixer off while it is loaded. Mixer is to be emptied with the drum rotating only.
- Pour the required amount of water into the drum. Thoroughly clean the mixer at the end of each operation.
- Keep mixer clean. Even the smallest trace of residual material left in the drum will harden and accumulate additional debris each time it is used.
- Dried cement should be completely removed from the drum.
- Do not throw bricks in the drum to clean it as it will damage the unit.
- Do not beat on the mixer with a shovel or any other tool to dislodge the accumulated dried cement as it will damage the mixer and void warranty.
- Drum may be scoured for approximately 2 minutes using a mixture of water and 1" gravel. Then discharge the gravel/water mixture and hose down with water the assembly both inside and out. The IP44D composition of the mixer enables you to hose down the drum assembly safely.
- Wipe dry any external components on the motor cover. Do not use any harsh chemicals to clean it.

NOTE: Do not pour or spray water directly over the cover of the motor as it may damage its internal components.

CAUTION: Do not put hands or limbs inside the drum whilst it is rotating as it may cause serious injury.

Maintenance

- Ensure the extension cord is unplugged before the motor cover is removed.
- Mixer is fitted with a factory preset tensioned belt. No adjustment except for minor grease to the spindle is required.

Warranty and Contact Details

Kmate Pty Ltd provides a 12 month warranty for this product when used for domestic purposes. Commercial use of the product will void all warranty.

The benefits of this warranty are provided in addition to other rights and remedies you may have under a law in relation to the goods and services to which this warranty relates. Our goods come with guarantees that cannot be excluded under the Australian Consumer Law. You are entitled to a replacement or refund for a major failure and for compensation for any other reasonably foreseeable loss or damage. You are also entitled to have goods repaired or replaced if the goods fail to be of acceptable quality and the failure does not amount to a major failure.

Before making a claim under warranty, please refer to your user/installation manual to ensure that you have followed correct operating procedures of your product, and refer to the trouble shooting section (if such exists) to assist solving any problems.

The warranty period begins from the day of purchase.

Your proof of purchase must be produced before assistance will be provided.

Where the Product is replaced pursuant to this Warranty, the replacement Product will be subject to the warranty terms and warranty commencement date of the original product.

This warranty is only valid if the product is operated and maintained in accordance with the manufacturer's instructions.

Damage to property including but not limited to outdoor equipment, flooring, furniture, carpets, walls, ceilings or any other event either directly or indirectly are excluded from warranty as well as any losses or expenses incurred by you in relation to the product or making a claim under this warranty including without limitation any costs associated with installation, reinstallation or transporting the product.

Filters, seals, wedges, rams, hoses and any similar consumable parts are not covered under this warranty.

A claim may be refused if the defective claim has arisen for reasons other than a manufacturer's fault or defective parts or workmanship. Circumstances in which a warranty claim may be declined include, but are not limited to the following:

- Normal wear and tear;
- Misuse or abuse, including failure to properly maintain, lubricate, clean or service the product;
- Damage to the drum, cord, motor.
- Damage caused by improper or incorrect installation, force-majeure, electrical surges, lightning, power grid fluctuations, water or by connection to alternative power supply sources (such as solar inverters etc), are not eligible for warranty repair;
- Damage caused by leaving the product exposed to the elements, including but not limited to rust and water damage;
- Insect or vermin infestation;
- Damage or corrosion to the product due to being exposed to the elements.
- Failure to clean or improper cleaning and/or operation of the product;
- If the product is modified or disassembled without authorisation from Kmate Pty Ltd in writing;
- If you are unable to supply a certificate of compliance for installation of any type as required by State & Territory Laws

Warranty contact:

Kmate Pty Ltd PO Box 133, Braeside VIC 3195
warranty@kartrite.com.au - 03 9790 0055

The latest version of this manual may be downloaded at
<https://kmate.com.au/CM6>

