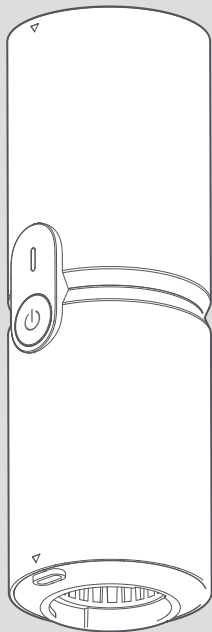


HOTO
Compressed Air Capsule



**Make It
Happen**



Visit our website for more Cool Tools
(www.hototools.com)

01 Safety Instructions

Warning!

Please read all safety warnings, instructions, illustrations, and rules provided along with the product and keep all warnings and instructions for reference.

Read this manual carefully before use, and retain it for future reference.

This product will produce noise above 75 dB (A) when in operation.

Please exercise caution.

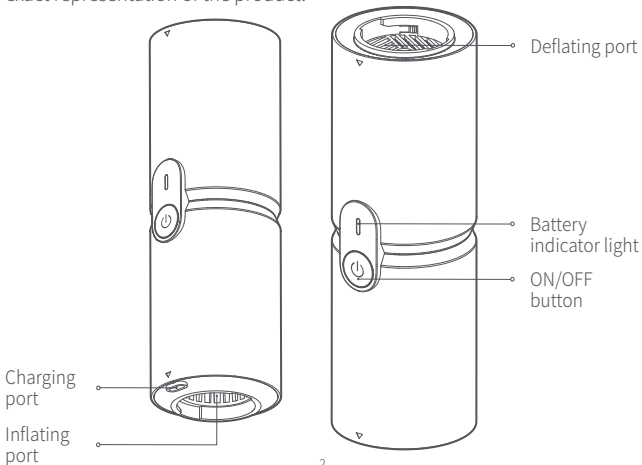
This product is not a toy, and children are forbidden to use it.

Do not vacuum cleaning without attaching dust cup.

This product is very powerful, please keep distance with your hair while using.

02 Product Overview

HOTO Compressed Air Capsule enables vacuum cleaning, inflating, dust blowing and vacuum deflating after the accessories are installed. For details, please visit the sales page or contact Hoto customer service. The images shown are for illustration purposes only and may not be an exact representation of the product.



Vacuum cleaning accessories



Dust cup (including a HEPA and metal filter)



Movable brush vacuum head

Inflating/deflate valve



Short air valve



Long air valve



Swim ring air valve

Vacuumping connector



Vacuum deflating connector

03 How to Use

Battery indicator and charging

Battery indicator

When the product is working, its battery indicator light is on.

When the power is $\geq 20\%$, the white indicator light always stays on.

When the power is $< 20\%$, the red indicator light always stays on, indicating that the product needs charging.

Charging

Please fully charge the product before using it for the first time. Please charge the product using an adapter that matches the product's charging power through a charging cable.

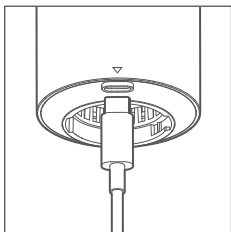
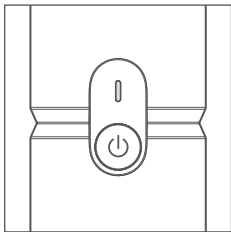
Charging status:

When the product is being charged, the red light presents a breathing lighting style.

When it is 100% charged, the white light always stays on.

Suggestions:

The product cannot be used when it is being charged.
Please buy a safe and compliant 5V USB adapter.



Turn-on/Turn-off/Gear switch

Turn-on

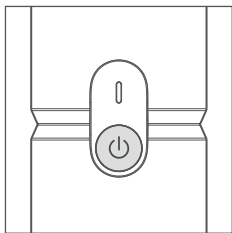
Press and hold the ON/OFF button for 1.5 seconds to turn on the machine and make it work.

Turn-off

When the machine is working, press and hold the ON/OFF button for 1.5 seconds to make it stop working and turn it off.

Gear switch

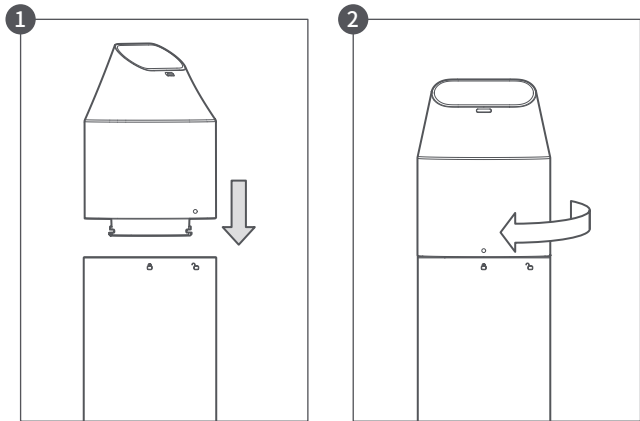
By default, the machine will run in high gear when turned on. To switch to low gear, press the ON/OFF button, and then press the button again to switch back to high gear.



Installation and cleaning of the vacuum cleaning accessories

Installation of the dust cup

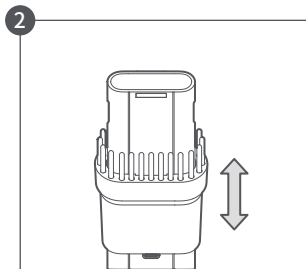
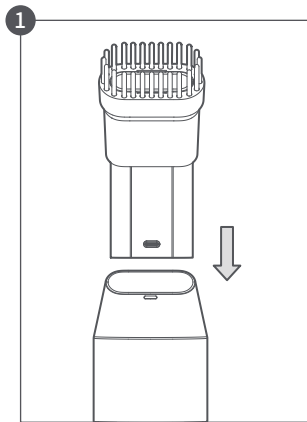
Please align the dot marking on the dust cup with the unlocking marking on the machine body, insert the dust cup, and rotate it clockwise to tighten it up. When the dust cup is installed, the dot marking on the dust cup will be aligned with the locking marking on the machine body. You can remove the dust cup by rotating it counterclockwise.



Installation of the movable brush vacuum head

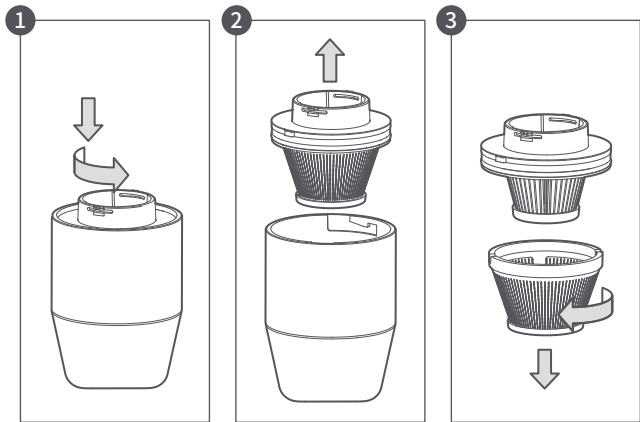
Once the dust cup is installed, insert the vacuum head with movable brush head into the dust cup as indicated by the arrow. When fully inserted, you'll feel a noticeable click, indicating that the vacuum head is fully installed. The brush component is movable, allowing it to be pulled back and forth.

Hold and pull the integrated short brush vacuum head to remove it.



Removal and installation of the HEPA in the dust cup

1. Press the dust cup lid and then rotate to screw it out.
2. Take out the internal filter and remove the dust in the dust cup.
3. To replace the HEPA filter, rotate the metal mesh on the filter to remove it. Then, rotate and install the new HEPA filter and metal mesh.

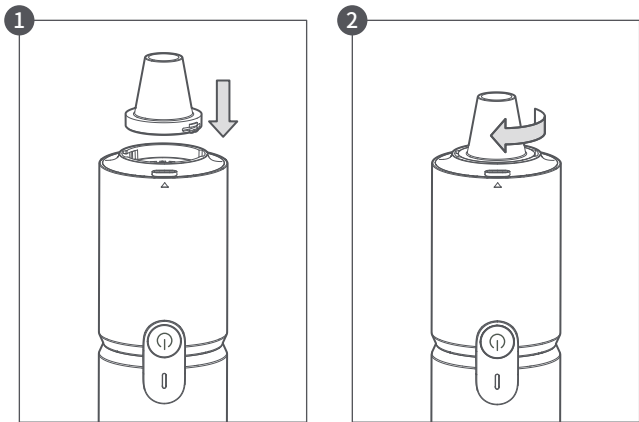


Installation of the air valve and connector

Installation of the air valve

To install the air valve, align the bump on the valve with the groove on the inflating/suction port. Insert the valve and rotate it clockwise to tighten. When fully installed, you will feel a noticeable click.

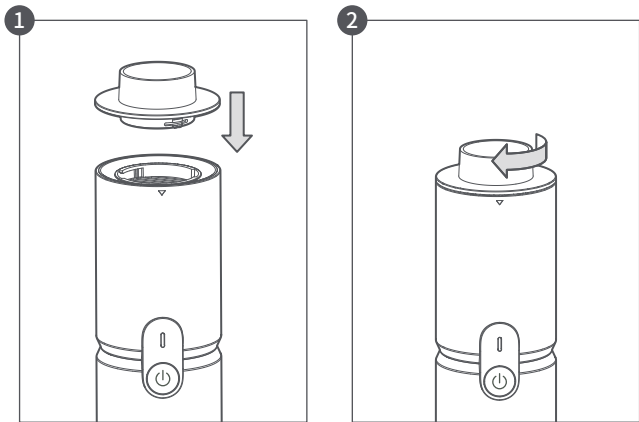
You can rotate the air valve counterclockwise to remove it.



Installation of the suction connector

Please align the bump on the connector with the groove on the suction port, insert the connector, and rotate it clockwise to tighten it. You will feel a noticeable click when the connector is fully installed.

You can remove the connector by rotating it counterclockwise.



Attention

Please use the product with caution when the pressure allowed by the balloon is smaller than the max inflating pressure of the product.

Please do not use accessories other than the components of the dust cup for vacuum cleaning, as the intrusion of fine dust may damage the product.

04 Precautions

- This product is not a toy, and children are forbidden to use it. The minimum recommended age for users is 16 years old. During working, please keep children at a safe distance from the product.
- The built-in lithium battery of the product cannot be disassembled. Do not throw the product into the fire or discard it at will. Overheating and hitting of the lithium battery and water damage to it may cause fire, autoignition, and explosion. Please do not place the product in hot environments such as vehicles for long.
- Do not keep the product at a temperature below -10°C or above 45°C, because overcooling or overheating will shorten the product's life of service and damage the built-in battery.
- If the product is left idle for long, its battery may be damaged. Please charge the product at least every three months.
- The product is equipped with a built-in direct current machine. Please do not use it in flammable and explosive environments.

- If the machine makes a strange noise or overheats during operation, please turn it off immediately.
- Please do not leave during the inflating. Observe the inflating process to prevent the inflating pressure from being too high.
- Please use the product in a dry and clean environment, as the product is not waterproof. Do not rinse the product.
- Please use a safe and compliant adapter, in combination with a compliant charging cable, to charge the product. Faults caused by a failure to charge as stipulated above will not be covered by the warranty.

05 Battery

- Please do not place the battery in extremely hot environments, such as sunshine, fire, microwave oven, and oven. Otherwise, explosions or flammable liquid and gas leakages may be caused.
- Please do not disassemble, hit, crush, or cut the battery. Otherwise, explosions may be caused.
- Please do not place the battery under extremely low air pressure. Otherwise, the battery may explode, or the flammable liquid and gas may leak.
- Please do not use the product if its battery is severely swollen.

06 Troubleshooting

Issues	Solutions
Fail to turn this product on	Turn on the machine after charging for a while
Slow inflating	<ol style="list-style-type: none">1. Check whether the power is sufficient.2. Check whether accessories are fully installed.3. Check whether the air outlet is fully connected to the air valve of the inflated object.4. Check whether the inflated object is subject to any air leakage.
Already turned on but unable to work	<ol style="list-style-type: none">1. Check whether the power is sufficient.2. Check whether the ambient temperature is beyond the requested range.
Air leaks after the air valve is connected	<ol style="list-style-type: none">1. Check whether the air valve is fully installed.2. Check whether the air valve is damaged or cracked.

07 Specifications

Name: HOTO Compressed Air Capsule

Model: QWCXJ001

Item Dimensions:

Approx. $55 \times 56 \times 163.5$ mm ($2.16 \times 2.2 \times 6.44$ in)

(bare machine, without accessories)

Net Weight: Approx. 356 g (0.78 lb)

Color: Black

Max Suction: 15000 Pa

Operating Temperature: -10°C to 45°C

Charging Temperature: 5°C to 40°C

Storage Temperature: -10°C to 45°C

Battery Type: Lithium-ion battery

Battery Capacity: 1900mAh

Operating Noise: Around 75dB (A)

Rated Input: 5V --- 3A

Rated Power: 120W

Rated Voltage: 10.8V

Charging Port: USB Type-C

Charging Time: Approx. 2.5 hours


Notes for packaging




The packaging materials are recyclable. Please dispose of packaging in an environmentally friendly manner.

08 Regulatory Compliance Information

Europe — EU declaration of conformity

 We, Shanghai HOTO Technology Co., Ltd., hereby, declare that this equipment is in compliance with the applicable Directives and European Norms, and amendments.

Disposal and recycling information

 All products bearing this symbol are waste electrical and electronic equipment (WEEE as in directive 2012/19/EU) which should not be mixed with unsorted household waste. Instead, you should protect human health and the environment by handing over your waste equipment to a designated collection point for the recycling of waste electrical and electronic equipment, appointed by the government or local authorities. Correct disposal and recycling will help prevent potential negative consequences to the environment and human health. Please contact the installer or local authorities for more information about the location as well as terms and conditions of such collection points.

Federal Communications Commission Supplier's Declaration of Conformity

This supplier's declaration of conformity is hereby for

Product: HOTO Air Compressed Machine

Model Number(s): QWCXJ001

Brand/Trade: HOTO

We declare that the above mentioned device has been tested and found in compliance with CFR 47 Part 15 Regulation.

This device complies with part 15 of the FCC Rules. Operation is subject to the following two conditions: (1) This device may not cause harmful interference, and (2) this device must accept any interference received, including interference that may cause undesired operation.

Note: This equipment has been tested and found to comply with the limits for a Class B digital device, pursuant to part 15 of the FCC Rules. These limits are designed to provide reasonable protection against harmful interference in a residential installation. This equipment generates, uses and can radiate radio frequency energy and, if not installed and used in accordance with the instructions, may cause harmful interference to radio communications. However, there is no guarantee that interference will not occur in a particular installation. If this equipment does cause harmful interference to radio or television reception, which can be determined by turning the equipment off and on, the user is encouraged to try to correct the interference by one or more of the following measures:

- Reorient or relocate the receiving antenna.
- Increase the separation between the equipment and receiver.
- Connect the equipment into an outlet on a circuit different from that to which the receiver is connected.
- Consult the dealer or an experienced radio/TV technician for help.

Representative of Responsible Party for SDoC

Company: HOTO (US) TECHNOLOGY CO LTD

Address: 919 North Market Street, Suite 950, Wilmington DE 19801

Country: U.S.A.

Customer Service(US): +1 855-577-2659

Mon-Fri 9:00 am - 5:00 pm(CST)

Manufacturer: Shanghai HOTO Technology Co., Ltd.

Address: Building 45, No.50 Moganshan Road, Shanghai, China

DECLARATION OF CONFORMITY



EU Declaration of Conformity

We

Shanghai HOTO Technology Co., Ltd.

Declare that the product:

HOTO Compressed Air Capsule / QWCXJ001

Complies with the essential health and safety requirements of the following directives:

2014/30/EU Electromagnetic Compatibility directive References to the following harmonized standard were made:

EN55014-1: 2021

EN55014-2: 2021

EN IEC 61000-3-2:2019+A1:2021

EN 61000-3-3:2013+A2:2021

2011/65/EU+ (EU) 2015/863 Restrictions of the Use of Certain Hazardous Substances in Electrical and Electronic Equipment
Authorised signatory and technical file holder:

Shanghai HOTO Technology Co., Ltd.

Building 45, No.50 Moganshan Road, Shanghai, China.

Designed by **HOTO**