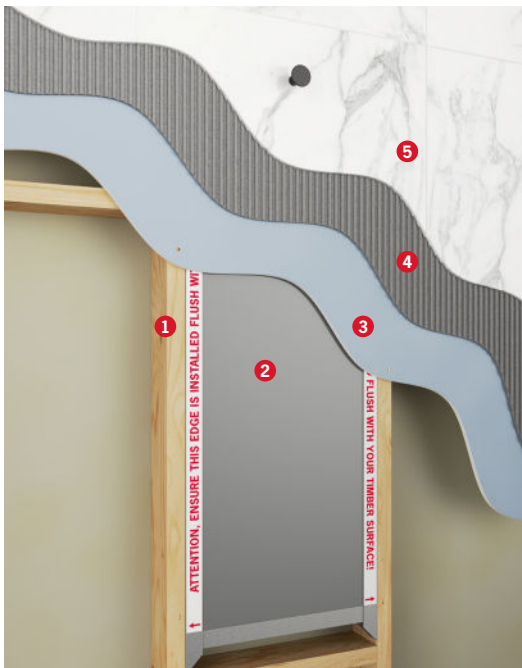




Thermorad In-Wall Heating System



- 1 Timber Stud Wall
- 2 Thermorad Heating Panel
- 3 Wall Sheet
- 4 Tile Glue
- 5 Tiled Wall Surface



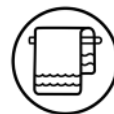
Create an invisible towel dryer

No one enjoys the experience of using a damp towel however it is a common reality for those who shower morning and evening or in areas of high humidity. The Thermorad sits invisibly behind the wall and dries a damp towel in around 4-6 hours.



Reduce drying times by up to 70%

The Thermorad panel is designed to be concealed in the wall whilst radiating heat directly behind a towel rail, to reduce the drying time of your towel by up to 70% as opposed to a non-heated towel rail.



Suitable for use with any rail, robe hook or ladder

The beauty of the Thermorad is that it can be located behind any towel rail or robe hook no matter the style, colour or finish. It can even be installed behind a non-heated ladder, providing the fixing points are outside the panel area.



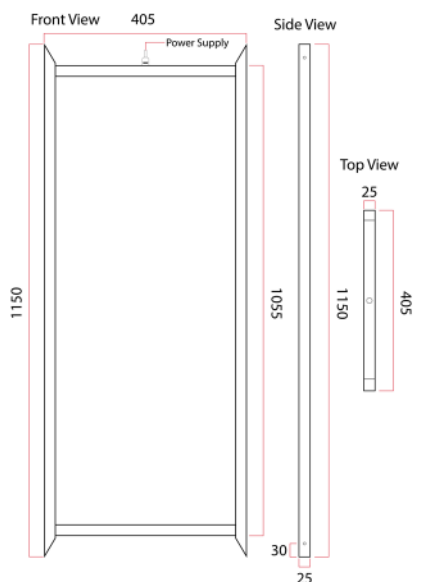
Low energy usage

The Thermorad uses only 160 watts an hour to run. This means that if it was running for 6 hours a day, it would cost around 25 cents a day to run.



Set and Forget

The use of a programmable timer allows you to set up your preferred drying schedule to ensure your towel is dry whenever you come to use it. Alternatively, it can be wired to an on/off switch for a manual operation.



Technical Data	
Width	405mm
Heated Width	350mm
Height	1150mm
Heated Height	930mm
Thickness	25mm
Max. Temperature	50°C
Warranty	10 Years
Wattage	160W
Cold Tail Length	2m

Installation Overview

Thermorad Heating Panels are easy to install in the wall before it is sheeted. This overview gives a guide to the basics. Always read the instructions in full before attempting your own installation.



Modify the frame work

The unit needs to sit between the studs in the wall and allowance for the power supply.



Double fixing requirements

For rails wider than 650mm wide we recommend installing two Thermorad panels next to each other.



Fix the Thermorad in position

Fix the panel flush with the wall frame using the four screws provided.



Sheet the wall & tile

Complete the wall installation and mount your rail above the Thermorad.

This is an illustrative guide only. Read the instruction manual that is supplied with the system in full before attempting installation.

7 Day Touchscreen Timer



The TRTS timer is a digital touch screen timer ideal for controlling the Thermorad. Simply set and forget your heating schedule and experience dry towels when using the bathroom.

Being able to program the time your Thermorad is running will ensure the unit isn't unnecessarily on therefore saving your ongoing running costs.

Please note, the timer will need to be purchased separately to the Thermorad heating panel.



Thermorad Overview Video

Learn more about how Thermorad works and the benefits that it offers.



Hear from a happy customer

Nikki McGar from Interior Styling shares why the Thermorad is her favourite hidden feature in her bathroom.



Stock Code	Size WxHxD (mm)	Heated Size (mm)	Output (W)	Voltage (V)
TR4011	405 x 1150 x 25	350 x 930	160	230-240

Stock Code	Colour	Orientation	Size WxHxD (mm)	IP Rating	Max Load
TRTS	White	Portrait	80 x 120 x 45 (25mm in Wall)	IP20	16A
TRTSB	Black	Portrait	80 x 120 x 45 (25mm in Wall)	IP20	16A
TRTSL	White	Landscape	120 x 80 x 45 (25mm in Wall)	IP20	16A
TRTSLB	Black	Landscape	120 x 80 x 45 (25mm in Wall)	IP20	16A