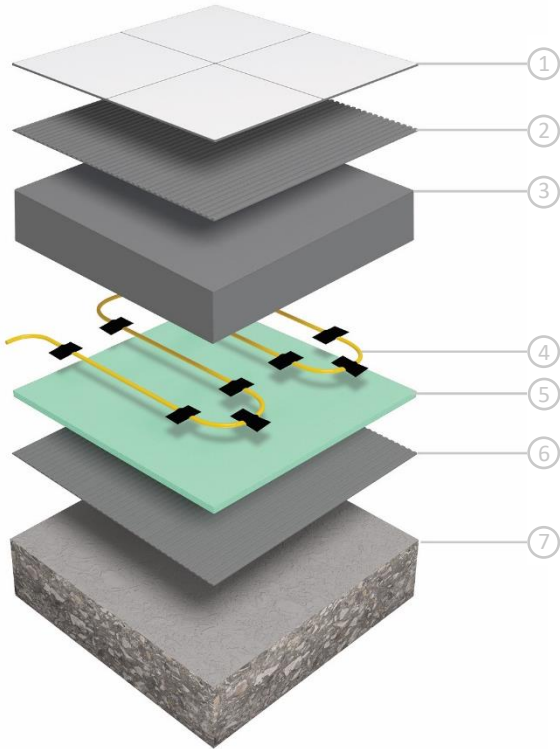


# Thermoscreed In Screed Heating Cable Kits



For Installation In Screeds Up To 50mm Thick



1. Tiled floor finish
2. Flexible tile adhesive
3. Sand & cement screed
4. Thermoscreed 18W/Im Loose Wire
5. Econoboard uncoated insulation board
6. Flexible tile adhesive
7. Concrete substrate



**Lifetime Warranty**

We are so confident in the quality of Thermoscreed Underfloor Heating that we give each cable a warranty that lasts a Lifetime with 3 year warranty on the Thermostat.



**Robust, hard wearing cable**

The advanced protective PVC coating on Thermoscreed cables protects the heating element during installation and provides a long product life span.



**In Screed heating**

Suitable for installation in screeds of 20mm to 100mm, and is recommended to be fixed to insulation boards.



**Efficient storage heating effect**

In Screed systems have a slower heat up and cool down time and are suited to rooms that are in constant use.



**Primary or secondary heating**

Thermoscreed is suitable for both primary and supplementary heating applications provided the property is adequately insulated.



**Flexible cable spacing**

The heating output per m<sup>2</sup> can be adjusted by varying the cable spacing to achieve your architects designed heating output for the room. We recommend an output of 180-220m<sup>2</sup> under screed.

## Technical Data



Kit Includes: Thermoscreed Cable, Fixing Tape, Manual Thermostat, Floor Temperature Sensor, Sensor Conduit, Cable Monitor, Installation Guide & Warranty Form.

Thickness	5.5mm
Max. Temperature	28°C *
Protection rating	IP67
Warranty	Lifetime on cable, 3yrs on thermostat
Wattage	18W/Im
Conductor Type	Single Ended
Cold Tail Length	3m

\*Regulated by floor sensing thermostat



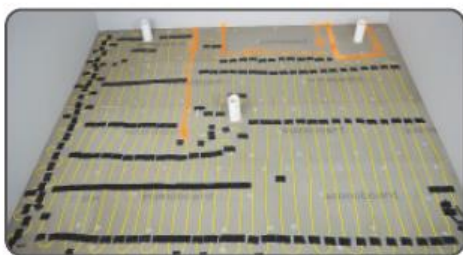
### Thermoscreed In Screed Cable

Stock Code	Length (m)	Area (m <sup>2</sup> )	Output (W)	Resistance (Ω)
3050TM	11.0	1.0 – 1.2	200	264.5
3052TM	22.0	1.8 – 2.2	400	132.2
3054TM	33.0	2.8 – 3.2	600	88.2
3055TM	39.0	3.3 – 3.8	700	75.6
3056TM	45.0	3.9 – 4.6	850	62.2
3057TM	55.0	4.7 – 5.6	1000	52.9



### Manual Thermostat Heating Kit

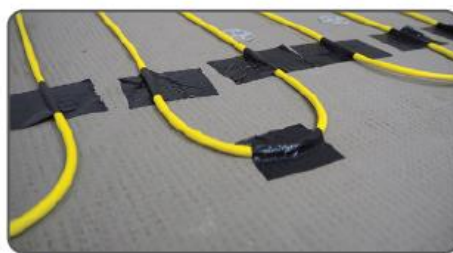
The Thermoscreed systems come in a complete kit which includes a manual thermostat. This unit is easily operated via the dial control on the face of the unit which allows you to set your desired floor temperature. The thermostat includes a floor sensor and conduit and must be installed in a vertical position. There is a three year warranty on the thermostat.



#### Lay out the Thermoscreed cable

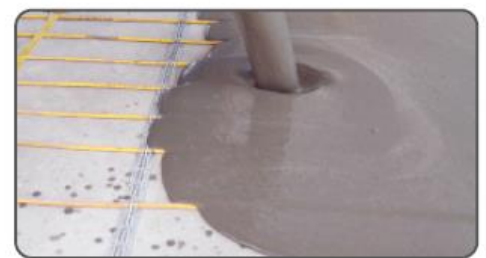
Run the heating cable back and forth throughout the room using the spacing calculated and fix in position using the tape provided.

**NEVER CUT THE YELLOW CABLE.**



#### Secure heating cables in place

Once all the cables are fixed into position go back and add additional strips of tape to ensure the cable is lying flat across the entire floor and the tape is tucked firmly around the heating cable with no air pockets.



#### Screeding over the heating

Take images of the installed cables before screeding. Cover the heating cables with a flexible sand and cement screed.