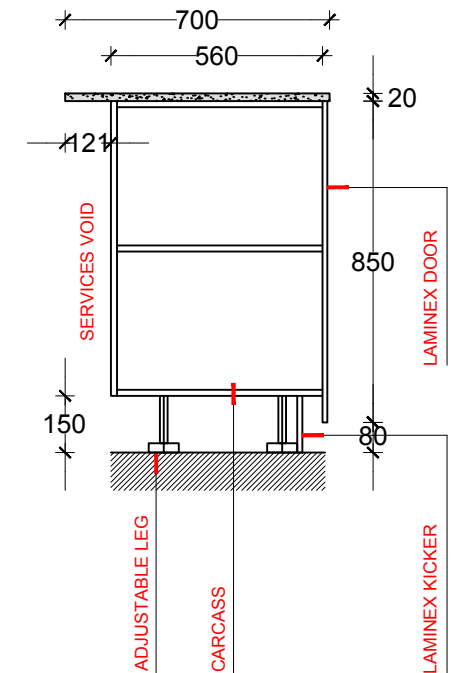
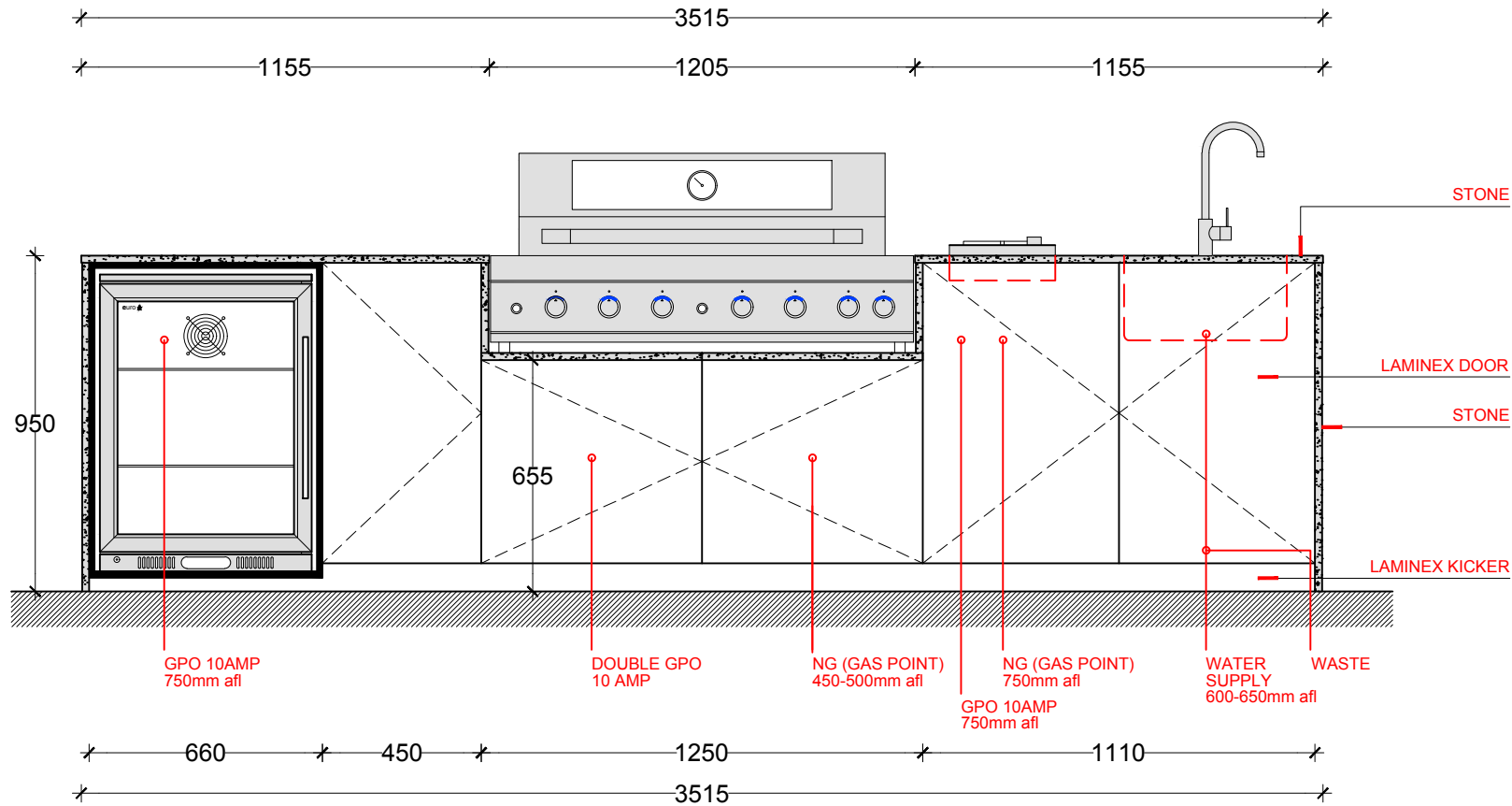


# KAKADU 1

## SERVICES HANDOUT



### NOTE :

- 1) THIS SERVICE HANDOUT APPLIES TO A STANDARD MODEL KITCHEN. SERVICES NEED TO BE CHANGED ACCORDING TO YOUR KITCHEN SPECIAL LAYOUT. (IE. REVERSE SIDE SINK & TAP...ETC.)
- 2) SERVICES NEED TO BE IN PLACE PRIOR TO ASSEMBLY AND ALL GAS, TAP AND WASTE SERVICES MUST HAVE MIN 175MM TAILS IN PLACE TO EXTEND IN TO CABINETS DUE TO 120MM VOID.
- 3) TO ENABLE INTERNAL GPO'S ELECTRICAL CABLE MUST HAVE MIN 200MM TAILS FROM WALL.
- 4) FOR NATURAL GAS WOK AND BBQ MUST HAVE SEPERATE GAS FEED LINES. BBQ REQUIRES BAYONET FITTINGA AND WOK IS DIRECT CONNECTION
- 5) PACKAGING AND PALLET REMOVAL IS NOT INCLUDED.