



## An underfloor heating thermostat that can control your electric underfloor heating system and an extra appliance

Thermotouch 4.3dC has been redesigned with bathrooms in mind and can be installed in a portrait or landscape orientation, with 8 screen colour settings to choose from



Control your underfloor heating and appliance (towel rail or mirror demister) from the same thermostat



Built in ambient and external floor temperature sensors. Compatible with a wide range of popular floor sensor probes



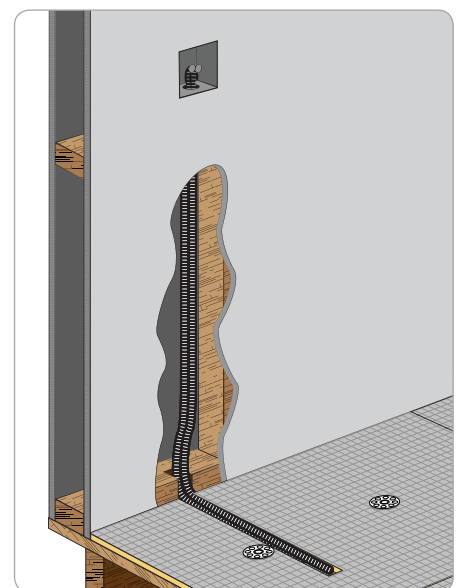
Customise your thermostat with a choice of portrait or landscape mode and 8 different colour screen settings



Design an economical heating schedule for your underfloor heating and copy to your towel rail or mirror demister



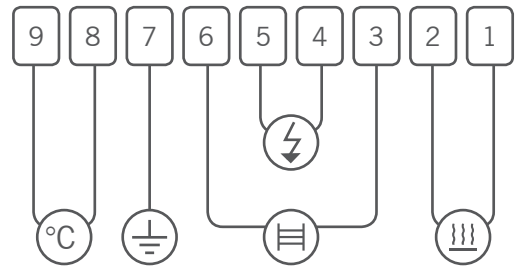
Manually boost your underfloor heating and towel rail until the next heating event or for 1, 2 or 4 hours



Floor temperature sensor should be installed in a conduit, within a clear area of the floor, and away from any other temperature influences.

## Wiring diagram

1. Live - Underfloor heating
2. Neutral - Underfloor heating
3. Neutral - Secondary relay (for towel rail or demister)
4. Neutral - 230V/240V supply
5. Live - 230V/240V supply
6. Live - Secondary relay (for towel rail or demister)
7. Earth - Common
8. Floor sensor (not polarity sensitive)
9. Floor sensor (not polarity sensitive)



## Box contents

1 x Thermotouch 4.3dC

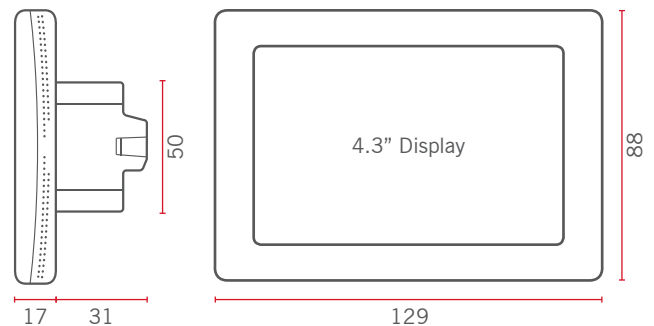
1 x Installation guide

1 x 3m floor temperature sensor probe

1 x 2m sensor conduit

2 x Fixing screws

## Dimensions (mm)



## Technical data

Supply voltage	230/240V 50/60Hz
Maximum load	16A (20A combined)
UFH relay	16A (3600W)
Appliance relay	5A (1125W)
Temperature range	5 ~ 35°C
Ambient	0 ~ 50°C
Compatible sensors	6.8kΩ, 10kΩ, 12kΩ, 15kΩ, 33kΩ (@ 25°C)
Accuracy	±0.5°C
Warranty	3 years
IP rating	IP30
Width	129mm
Height	88mm
Depth	48mm (31mm in wall)