

AKAI

DAB/FM Digital Radio

AKDB593

Instruction Manual



AFTER SALES SUPPORT

1300 886 649



Welcome

Congratulations on choosing to buy an AKAI product.

All products brought to you by AKAI are manufactured to the highest standards of performance and safety and, as part of our philosophy of customer service and satisfaction, are backed by our comprehensive 1 Year Warranty.

We hope you will enjoy using your purchase for many years to come.



Contents

General Safety Instructions	4
Parts List	5
Getting Started	6
Using the Radio	7
Product Care	19
Troubleshooting	20
Technical Specifications	21

General Safety Instructions

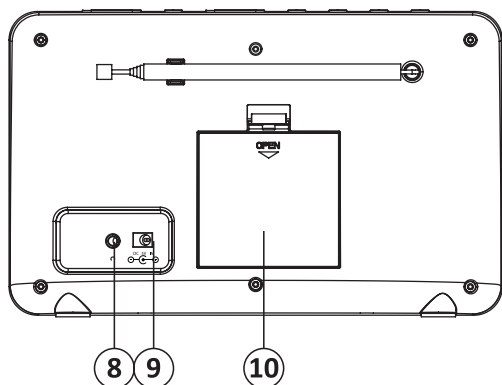
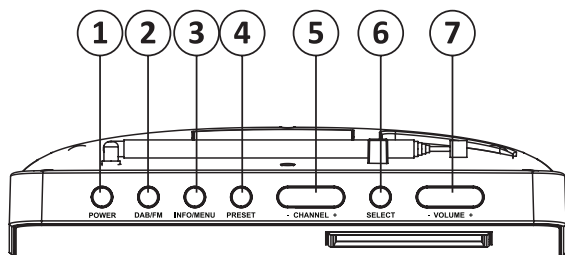
Read this manual thoroughly before first use and keep it in a safe place for future reference, along with the warranty card, purchase receipt and carton. The safety precautions enclosed herein reduce the risk of fire, electric shock and injury when correctly adhered to. **Follow all instructions and take notice of all warnings to reduce the risk of fire or electric shock.**



	The lightning flash with arrowhead symbol, within an equilateral triangle, is intended to alert the user to the presence of uninsulated "dangerous voltage" within the product's enclosure that may be of sufficient magnitude to constitute a risk of electric shock to persons.
	The exclamation point within an equilateral triangle is intended to alert the user to the presence of important operating and maintenance (servicing) instructions in the literature accompanying the appliance.

- For household and indoor use only.
- Place the appliance on flat, stable surface with adequate ventilation and away from other sources of heat. Minimum distances around the appliance for adequate ventilation is 5cm. Do not cover or restrict ventilation openings.
- Fully unwind the cable before plugging in and ensure the cable is positioned away from areas where it is likely to get damaged or cause a trip hazard.
- Do not operate the appliance if damaged or after is malfunctions. In the event supply cord is damaged, it must only be replaced by a qualified service engineer, with a suitable approved part.
- Do not pull on cable to disconnect from mains supply.
- Keep appliance, cable and plug dry and away from areas where it is likely to get splashed. Avoid using in hot, humid environments.
- Do not place items with naked flames or containers with liquids on this appliance.
- Switch off and unplug when not in use and before cleaning or servicing the appliance. Servicing of this appliance must only be carried out by a qualified electrician.
- Always ensure the mains plug is ready to be unplugged - Do not use with "lockable" sockets or permanently wire to mains.
- The appliance is not intended for use by persons (including children) with reduced physical, sensory or mental capabilities, or lack of experience and knowledge, unless they have been given supervision of instruction concerning the use of the appliance by a person responsible for their safety.
- Young children should be supervised to ensure that they do not play with the appliance.

Parts Lists



TOP PANEL

1. ON/OFF button
2. DAB/FM button
3. INFO/MENU Button
4. PRESET Button
5. Channel Button
6. Select Button
7. Volume Button

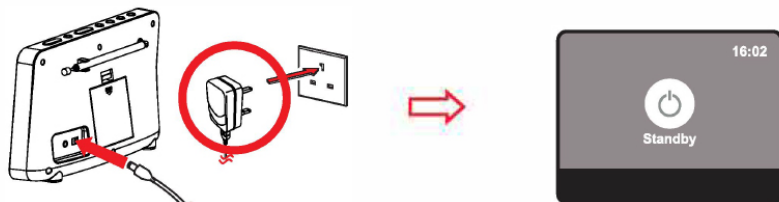
REAR

8. Earphone Jack
9. DC in
10. Battery Compartment

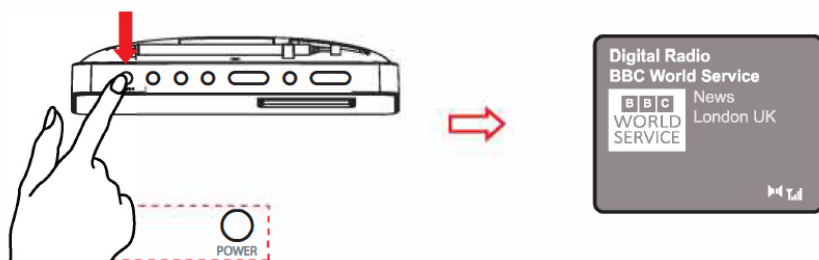
Getting Started

Mains Operation

Fit the AC power cord into the back of the unit and plug into the household socket press the power button to switch on.

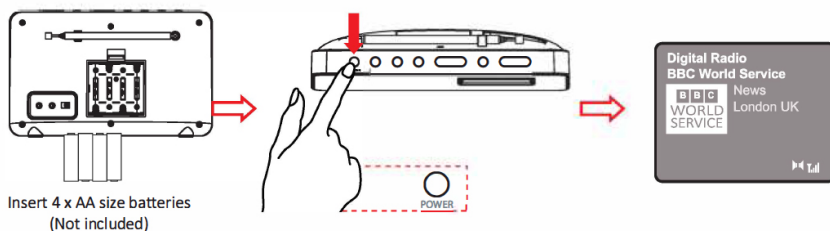


Note: Standby mode only available when radio powered by adapter.



Battery Operation

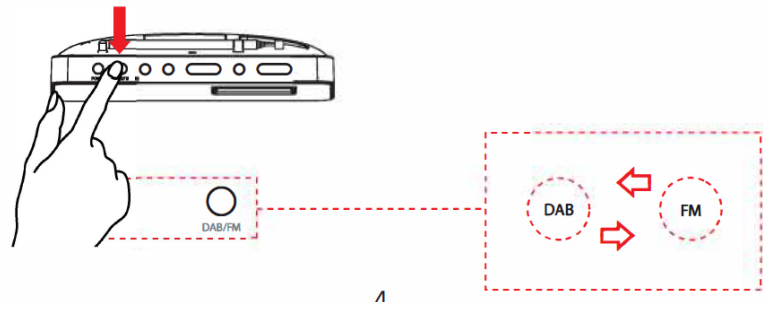
Fit 4 x AA batteries into the battery compartment and press the power button to switch on.



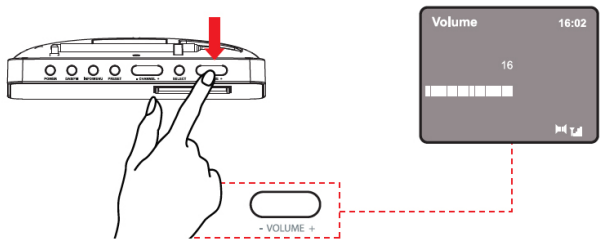
Using the Radio

1. Modes

Press the MODE button to switch between DAB and FM.



2. Volume Control



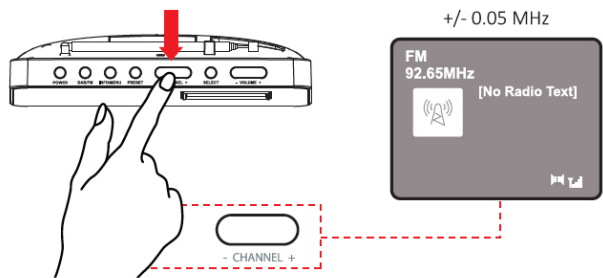
3. Changing Station (DAB)



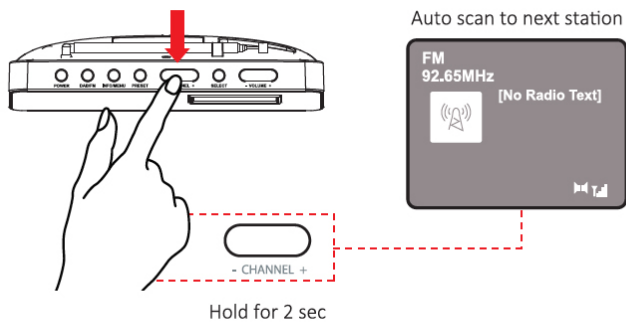
Select the station you wish to listen to

Using the Radio (Cont.)

4. Changing Station (FM)

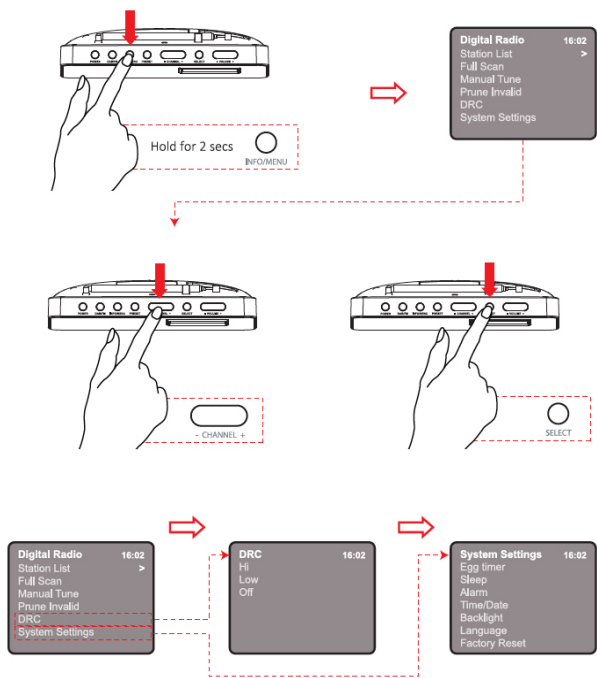


5. Auto Scan (FM)

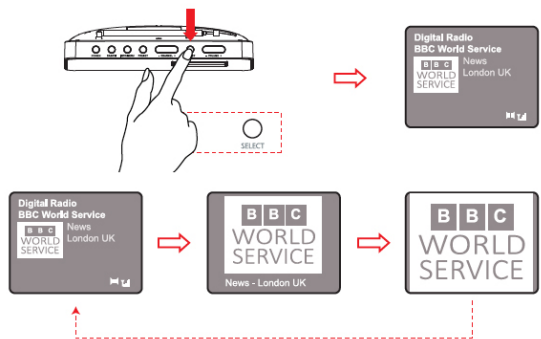


Using the Radio (Cont.)

6. Menu

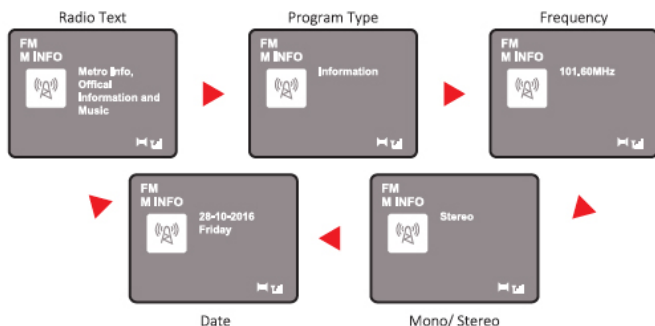
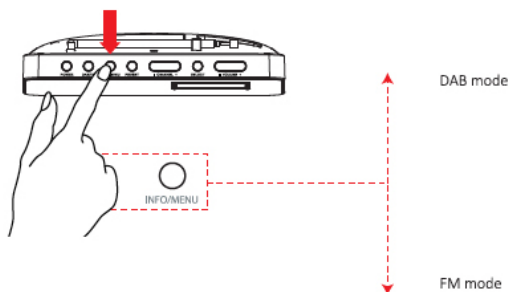
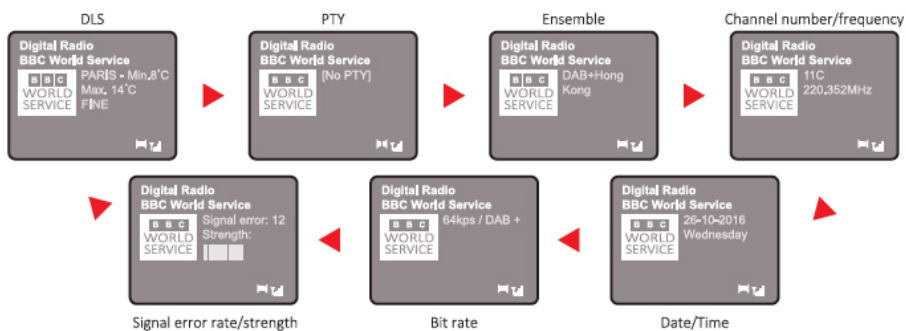


7. Slide Show



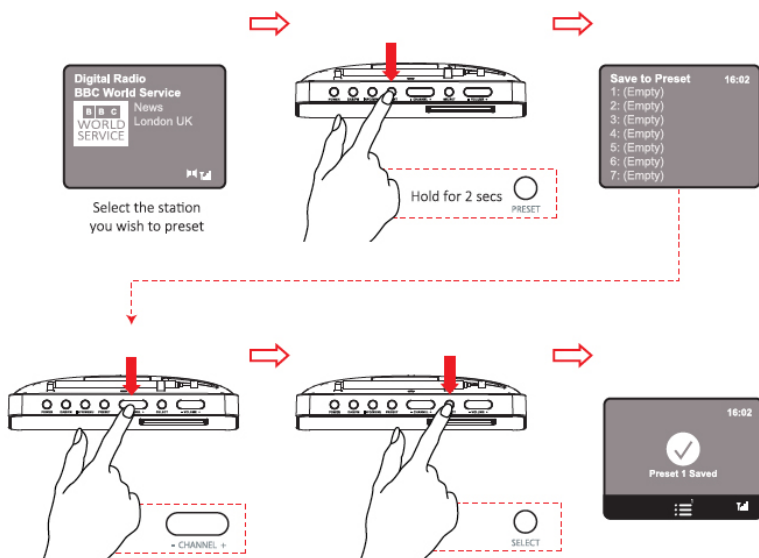
Using the Radio (Cont.)

8. Info

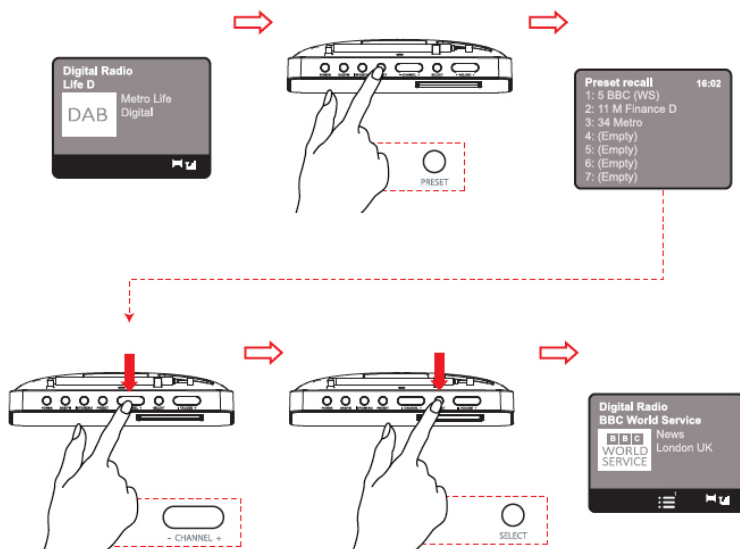


Using the Radio (Cont.)

9. Storing Stations

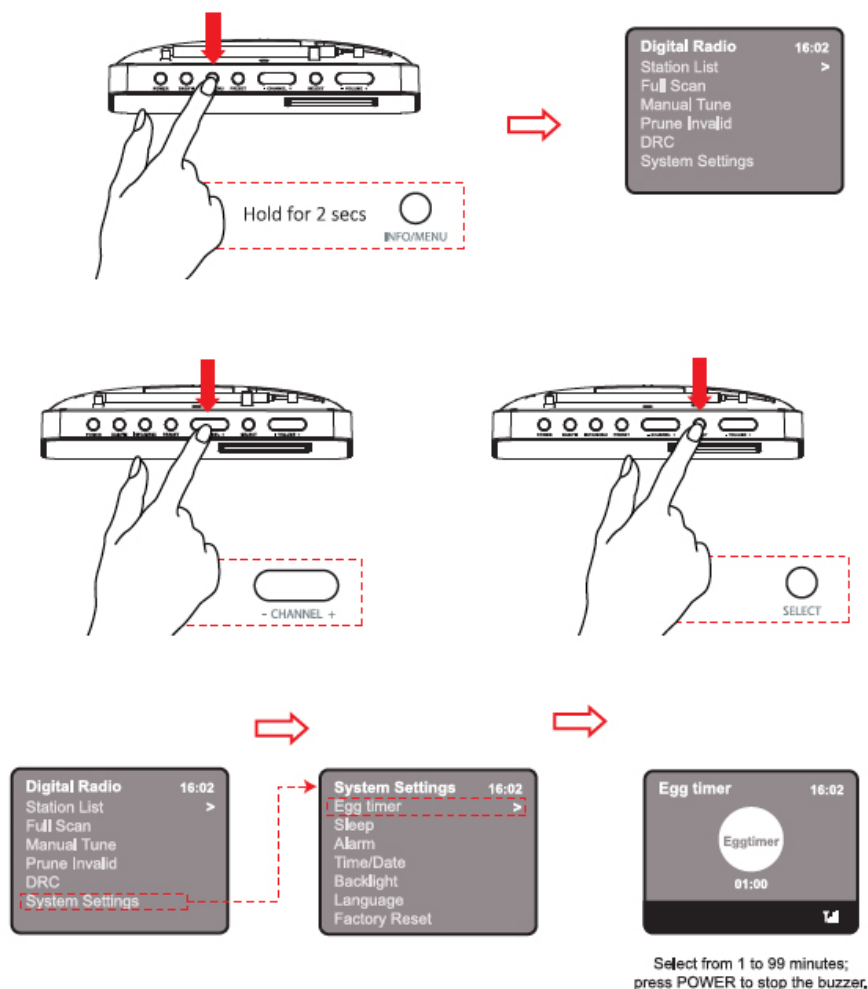


10. Recall Presets



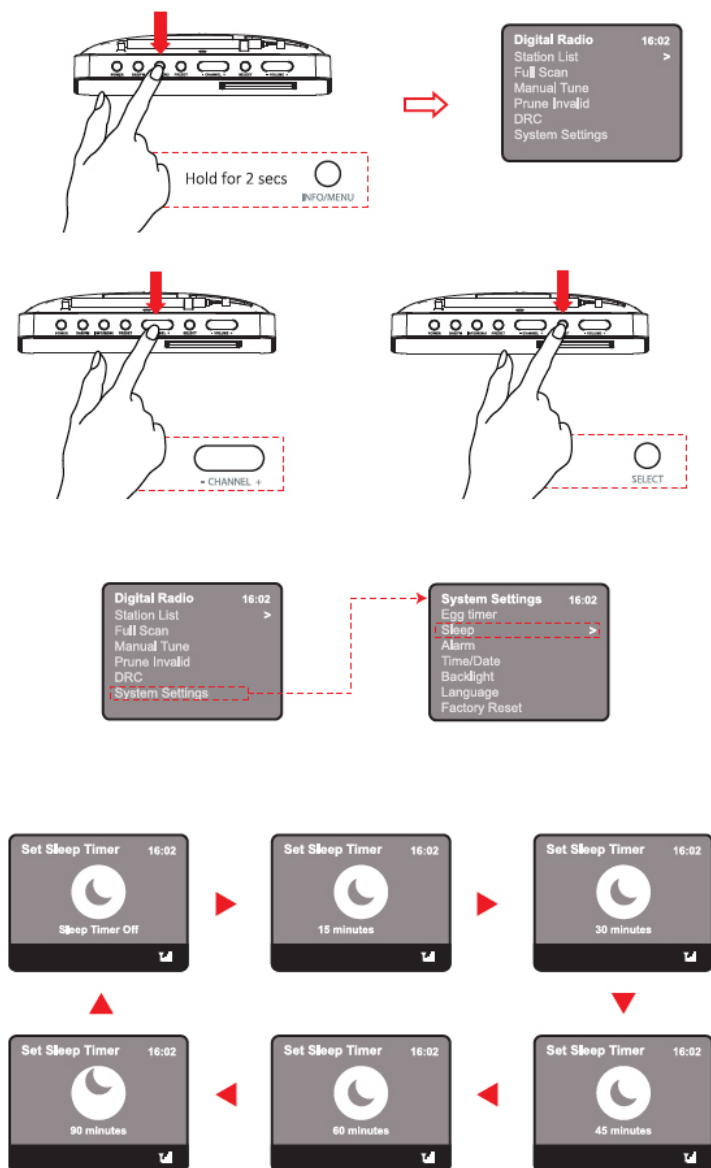
Using the Radio (Cont.)

11. Egg Timer



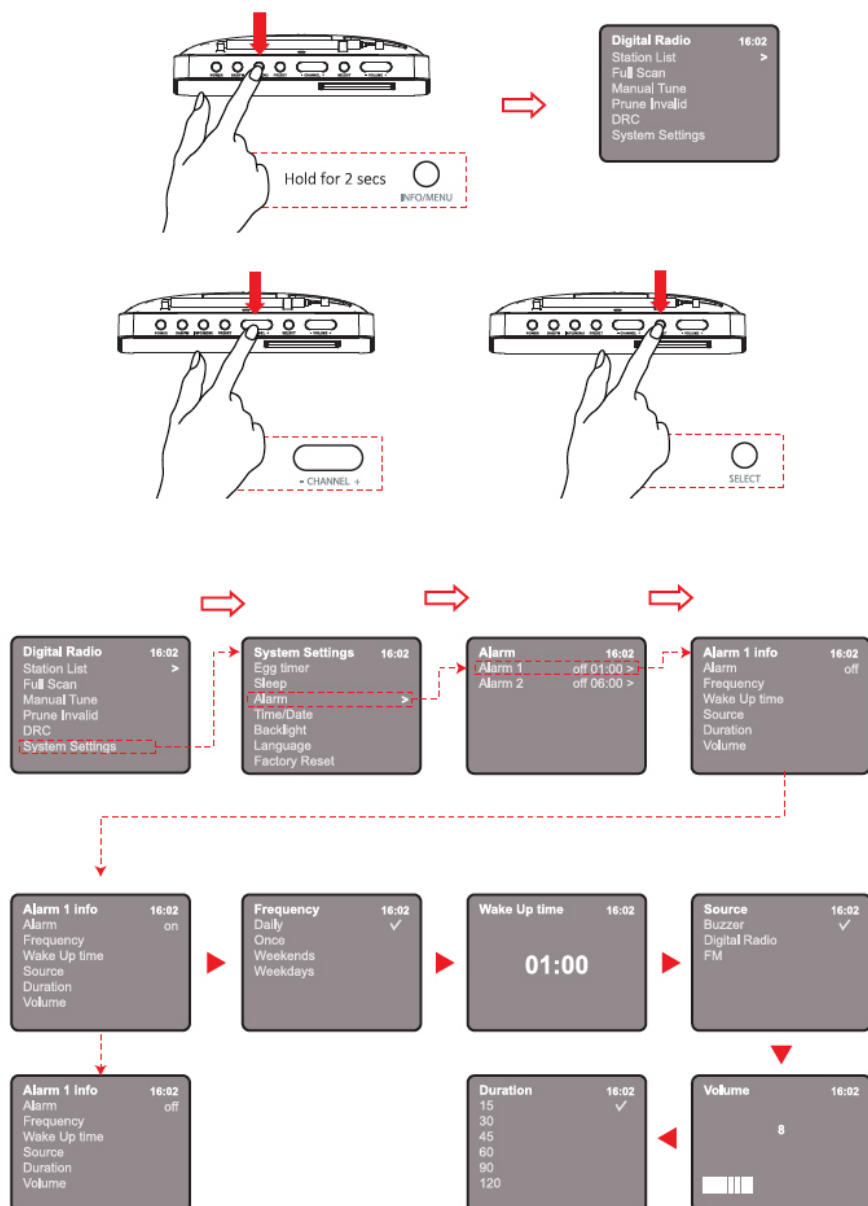
Using the Radio (Cont.)

12. Sleep



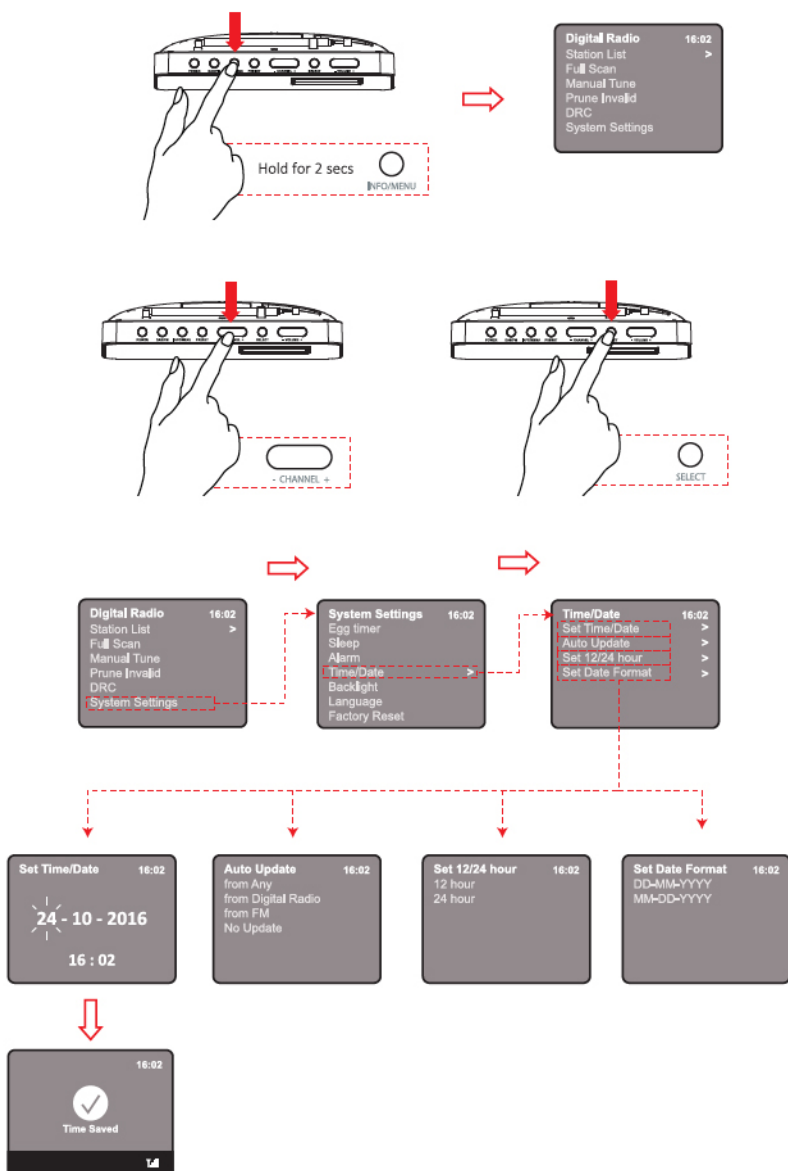
Using the Radio (Cont.)

13. Alarm



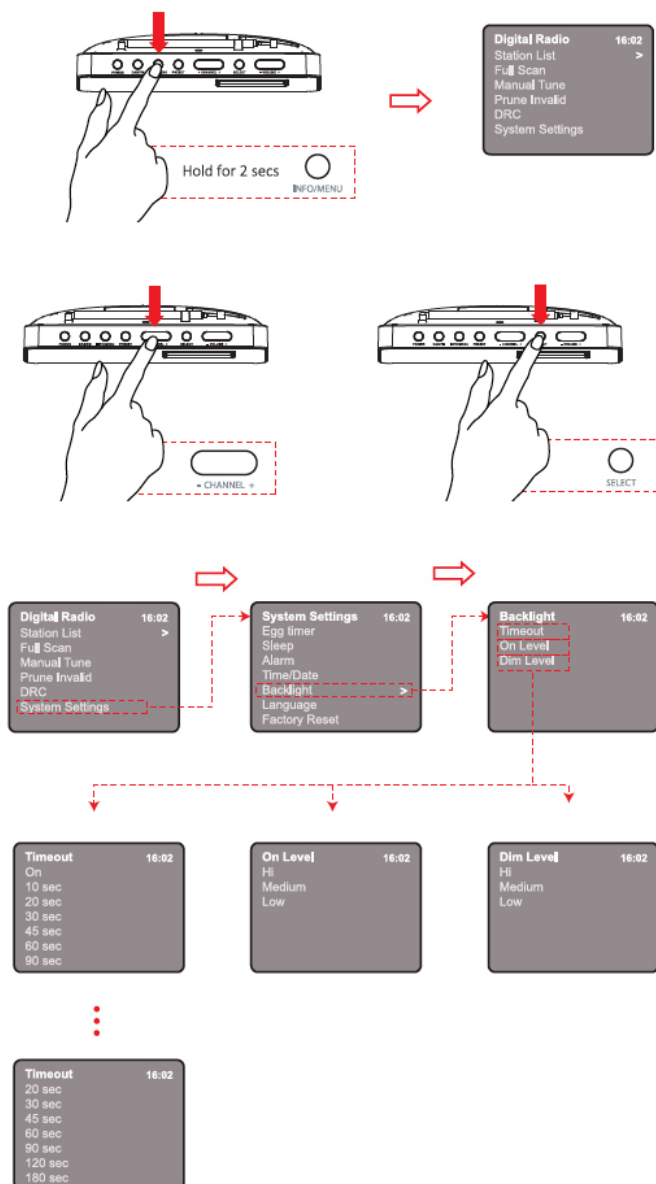
Using the Radio (Cont.)

14. Time and Date



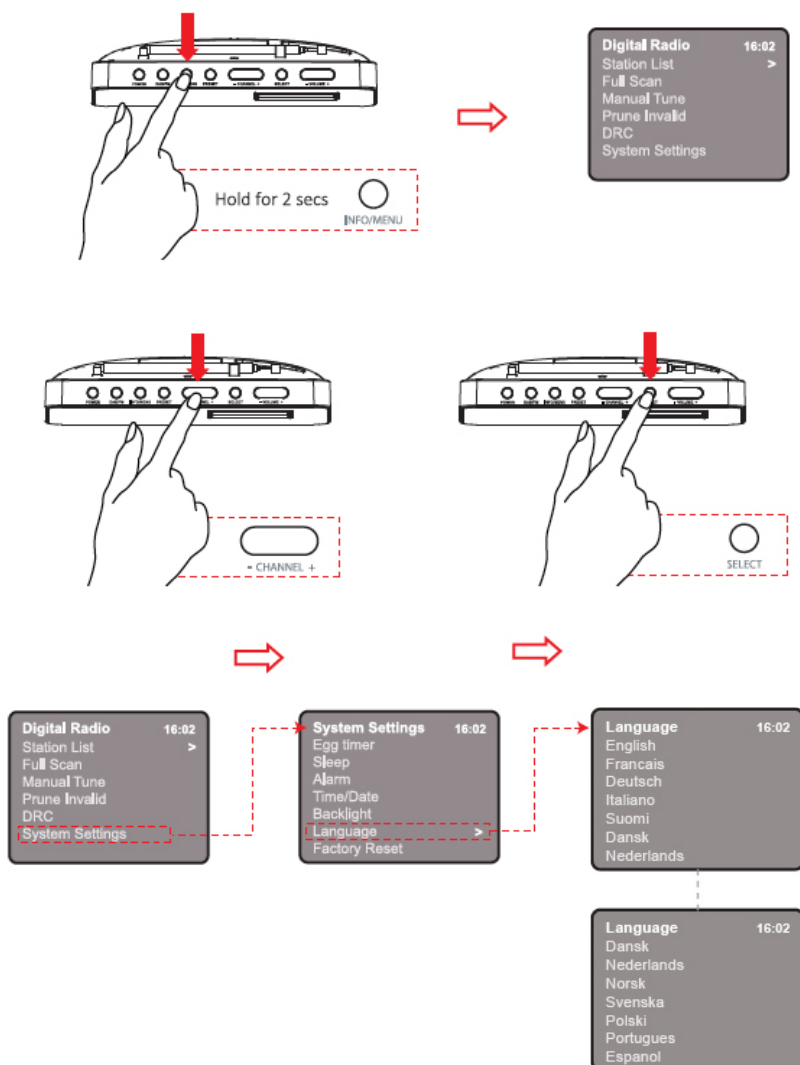
Using the Radio (Cont.)

15. Backlight



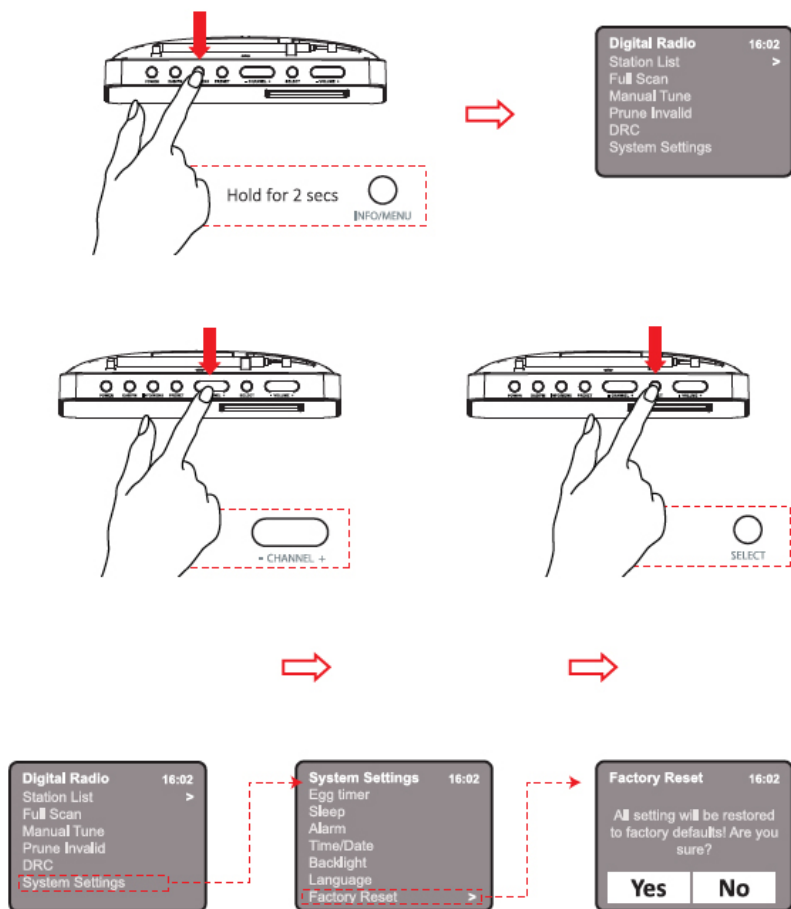
Using the Radio (Cont.)

16. Language



Using the Radio (Cont.)

17. Factory Reset



Note: Factory reset will erase all station lists, settings previously stored

Product Care

Care and Maintenance

Wipe external surfaces with a soft cloth. If the casing is very dirty, unplug from the mains supply and use a damp cloth soaked in a weak solution of washing up liquid and water. Allow to dry thoroughly before reusing.

Responsible Disposal

At the end of its working life, do not throw this appliance out with your household rubbish. Electrical and electronic products contain substances that can have a detrimental effect on the environment and human health if disposed of inappropriately. Observe any local regulations regarding the disposal of electrical consumer goods and dispose it appropriately for recycling. Contact your local authorities for advice on recycling facilities in your area.

Troubleshooting

Problem	Possible Cause	Solution
No sound	Your headphones may be connected. The volume may have been set to low. The power cord may not be connected correctly/ firmly.	Disconnect your headphones from the unit. Adjust the volume level of the radio. Reconnect the power cord firmly.
Audio distortion or intermittent cut-out	Low signal strength.	Check/re-position the antenna. Move the radio to another location. Re-scan local (high-strength) stations only.
No DAB+ Signal	DAB+ may not be available in your area.	Visit the digital radio website to find out if DAB+ is available in your area: www.digitalradioplus.com.au

Error Messages

Error Message	Meaning
'Service not available'	No DAB Reception.
'Signal error'	The DAB signal has been interrupted.
'No DAB Station'	The listed station cannot be found.
'No stations found'	No DAB stations are available, check aerial.
'No Radio text'	No RDS text information is available on this station.
'No PTY'	No RDS programme type information is available.
'No Name'	No RDS station name is being broadcast.

Technical Specifications

Description	DAB+/FM Digital Radio
Speaker:	1 x 1W RMS
Frequency Ranges:	FM: 87.5-108MHz DAB/DAB+: 174-240MHz
LCD Display:	2.8 inches colour TFT display (w/ Black backlight)
Power Supply:	DC power input: 4 x 1.5V AA-size batteries Power adapter: DC 5V, 1A
Dimensions (LxWxH):	216mm x 51mm x 133mm

This page has been left blank intentionally.

This page has been left blank intentionally.

Warranty returns

Should you for any reason need to return this product for a warranty claim, be sure to include all accessories with the product.

Product does not work?

If you encounter problems with this product, or if it fails to perform to your expectations, please contact our After Sales Support Centre on (AU) 1300 886 649 or (NZ) 0800 836 761 before returning it to the store for a refund.

Distributed by Tempo (Aust) Pty Ltd
PO BOX 6056 Frenchs Forest, Australia NSW 2086
Email: info@tempo.org